

SCANDISPLAY

creative ideas | intelligent solutions | reliable partners



DESIGN PORTFOLIO

// introduction

Founded in 1996, Scan Display is a leader in the African exhibition, events and retail display industries, specialising in award-winning exhibition stands, retail display, and events and exhibition infrastructure.

Our product range extends from large custom-built stands and portable systems to banner systems, brochure holders, display cases and shopping kiosks.

Scan Display supplies the full range of exhibition and event services including shell scheme, carpeting, electrics, furniture and audio-visual equipment.



// design team



// Paul Hugo - Creative Director

Paul is a registered architect (SACAP SAIA) and graduated from the University of Port Elizabeth. He worked locally and internationally as an architect for 10 years prior to joining the exhibition industry. He also completed a Construction Management Programme in 1999 at the University of Stellenbosch. After four years in the exhibition industry, he joined Scan Display in 2004 and has since been involved in design, management and product development.



// Jacob van Zyl - Exhibition Designer

Jacob is an experienced designer and has worked at Scan Display since 2013. His understanding of both the creative and technical importance of exhibition design makes him a key player in our team. Jacob is instrumental in establishing long-term relationships with our clients.



// Helena Klawikowski - Exhibition Designer

Helena is a creative with nine years' experience in interior and exhibition design. She has worked at Scan Display for three years. Helena brings a feminine approach to all of her designs and is a great asset to our team.



// Chase Ronaldson - Exhibition Designer

Chase's formal training is a BTech in Interior Design from the University of Johannesburg. He has worked at Scan Display since 2012 and is now a Senior Designer. Chase is imaginative, creative and the innovator of our design team.

// design team



// René Fielies - Exhibition Designer

René's career spans 16 years, starting at Scan Display as an exhibition designer in 2008. She was promoted to Design Manager at the Johannesburg branch in 2018, where she oversees the company's local graphic and interior design teams and is responsible for liaising with clients and account executives on creating concept designs.



// Stevi van den Berg - Exhibition Designer

Stevi's formal training is a BTech Interior Design from the University of Johannesburg. She has a combination of residential design experience and three years in exhibition design. She understands the user's experience as the key element to successful design and incorporates this throughout her work.



// Juliette Loveland - Exhibition Designer

Juliette graduated from Inscape Education Group with a Bachelors Degree in Design (Interior Design). Thereafter, she worked with an architectural company where she focused on inclusive design in the built environment. In 2014 she joined the exhibition industry, predominantly working in infrastructure and with aluminium system construction. In 2018 she joined the Scan Display team which enabled her to extend her custom design skills and manufacturing knowledge.



// Jennipher Kwanjana - Exhibition Designer

Jennipher is a registered professional with the African Institute of the Interior Design Professions (IID) and a graduate from The Design School Southern Africa. She worked as an interior designer in residential and retail design before joining Scan Display in 2017.

// design team



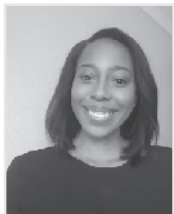
// Sylvia Alves - Exhibition Designer

Sylvia joined Scan Display in 2015 after graduating from the University of Johannesburg and is now a senior interior designer. She is an enthusiastic team member with a can-do attitude and a knack for developing creative solutions.



// Karina Rodrigues - Exhibition Designer

Karina has a Bachelor of Arts degree in Interior Design from Greenside Design Center. Having worked in the exhibition industry for over 10 years gaining experience as a designer and account executive, her passion and ability to work under pressure are paramount to her success.



// Lesego Masekela - Exhibition Designer

Lesego is an interior designer who has worked in the exhibition industry for the last five years. She also spent a year working in commercial interior design. She enjoys using a simplistic approach for her designs.



// Chanel King - Exhibition Designer

Chanel is an experienced interior designer who joined the Scan Display team as a Junior Designer in 2019. She is a strong design professional with a BA degree in Interior Design.

// design team



// Claudia Robson - Graphic Designer

Claudia is a design creative with six years' experience. She has been with the Scan Display team for two years. Claudia is valued for her efficiency, creativity, attention to detail and her less is more approach to design. She values simplicity in her designs and more often than not, can take a client's idea and convey it in a very simple yet memorable way.



// Mathews Kganyago - Graphic Designer

Mathews has a B-Tech Degree in Visual Communications from Tshwane University of Technology. Mathews has been at Scan Display for four years as a graphic designer. He has a balanced blend of creativity and analytical qualities and he strives for order, simplicity and balance in his designs.



// Shannon Anderson - Graphic Designer

Shannon is a graduate of graphic design and is dedicated to graphical translations of the many and varied briefs our company manages. She is respected for her crisp design "feel" and translation of client briefs in terms of graphical requirements.

// projects

FIERA MILANO EXHIBITIONS AFRICA

Show: Investec Cape Town Art Fair 2020

Location: Cape Town International Convention Centre

Elements:

// Size: 6000m²

// 1300m² running metres of re-usable custom gallery walling, 734 running metres custom trussing rigged, 1000+ LED lights, 3.6m high display walls.

// 63 national and international galleries.

// Gallery and show layout design, registration infrastructure, talks theatre, VIP Lounge, 130m²+ graphic signage applied.

// projects

FIERA MILANO EXHIBITIONS AFRICA



// projects

MAURITIUS

Show: World Travel Market (WTM) Africa 2018

Location: Cape Town International Convention Centre

Elements:

// Size: 6m × 7m

// Won Best Stand and Best Stand Feature at WTM Africa 2018.

// Multiple meeting areas with a semi-private VIP meeting area.

// Showcases the diversity of Mauritius as well as highlighting 50 years of independence.

// Use of Wenge and Sapile veneers.

// Use of multiple, large format graphics, all suspended at high levels to ensure an open and accessible ground floor.

// Fitted kitchen and bar.

// Special features included a 6m × 6m suspended backlit bulkhead structure and a photobooth where visitors could collect information and take a picture of themselves, superimposed on a virtual background of scenic Mauritius.

// projects

MAURITIUS



// projects

CHINA PAVILION

Show: Africa Aerospace and Defence 2018

Location: Centurion, Tshwane

Elements:

// Size: 850m²

// Large pavilion with multiple brands connected by design, language, materials and finishes.

// The whole area appeared as one stand with the use of a large LED back-lit bulkhead.

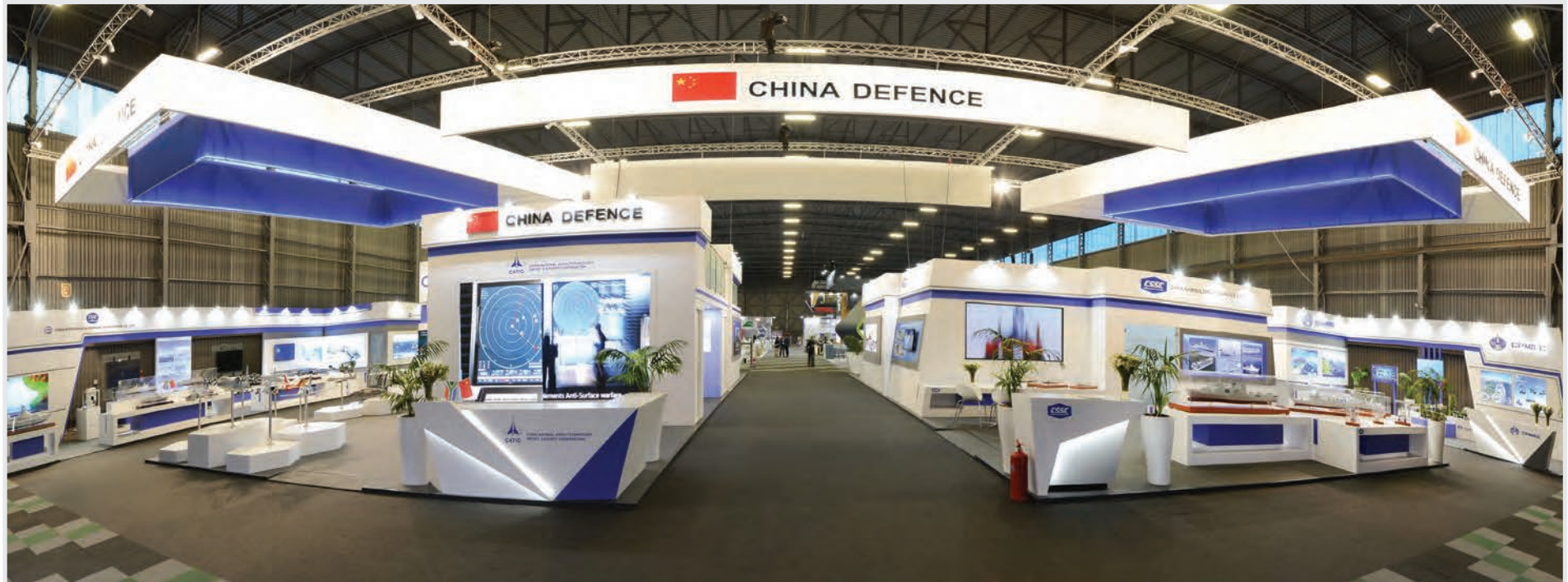
// Complex, double storey layout with multiple private and communal meeting areas, storerooms, product display, discussion space and AV displays.

// Various lighting effects from LED lightboxes, directional and area lighting and a massive suspended bulkhead.

* Designed by Beijing Eagle & built by Scan Display

// projects

CHINA PAVILION



// projects

LIQUID TELECOM

Show: AfricaCom 2018

Location: Cape Town International Convention Centre

Elements:

// Size: 72m²

// Multi-level double storey stand that spans across two stands and bridges across the separating aisle with stair access from both sides.

// Custom designed, re-usable modular double deck structure. Downstairs has multiple discussion areas for quick interactions with visitors as well as a storeroom and extensive use of plants.

// Large format backlit tension fabric graphics.

// Multiple private VIP meeting spaces crossing over the aisle on the top floor.

// projects

LIQUID TELECOM



// projects

GHANA PAVILION

Show: Mining Indaba 2019

Location: Cape Town International Convention Centre

Elements:

// Size: 56m²

// Large pavilion with multiple brands connected by design and use of backlit graphics and tension fabric graphic bulkhead.

// Clean and simple look and feel.

// Simple maze design to accommodate influx of delegates.

// projects

GHANA PAVILION



// projects

ETION

Show: Africa Rail 2019

Location: Sandton Convention Centre

Elements:

// Size: 36m²

// Design based on the company's new marketing brochure – bringing that brochure to life.

// Use of laser-etched acrylic with LED lighting that emphasises the pattern to give the stand a 'living' element.

// Open and airy look and feel for interaction.

// projects

ETION



// projects

FNB WINES2WHALES

Show: FNB Wines2Whales Cycle Stage Race

Location: Western Cape

Elements:

// Size: 1200m²

// Activation area placed at the race start and end.

// Large interactive area which is used both as a marketing tool but also allows the cyclists a safe and relaxed space to chill after a gruelling day on the bikes.

// Area divided into two spaces – main marquee and the outside viewing area.

// The space both inside and outside has soft furnishings to allow the cyclists a comfortable spot to put their feet up and charge their phones. Work spaces were also provided, for catching up on the news and interacting with the brand ambassadors.

// The units within and outside the marquees were designed and constructed in a way that would allow them to be assembled and dismantled in a simpler way and flat packed. The units could also be reconfigured in different layouts depending on the client's request.

// projects

FNB WINES2WHALES



SOUTH32

Show: Mining Indaba 2019

Location: Cape Town International Convention Centre

Elements:

// Size: 24m²

// Stand design was based on incorporating a back wall space.

// Clean professional look and feel was what the client wanted.

// Private meeting room with coffee station to accommodate four people, with a black vinyl strip detail to separate the meeting room from the rest of the stand.

// Small reception desk for meet and greet.

// LED strip lights as well as backlit fabric prints for a visual impact.

// projects

SOUTH32



// contacts

Johannesburg

Managing Director

Justin Hawes

+27 11 447 4777

justin@scandisplay.co.za

Cape Town

Creative Director

Paul Hugo

+27 83 564 0465

paul@scandisplay.co.za

Cape Town

Sales Manager

Jane Steel

+27 83 702 2500

jane@scandisplay.co.za



www.scandisplay.co.za

